

**NITECORE®**

**NU17**

**ULTRA LIGHTWEIGHT BEGINNER HEADLAMP**



These images are for guide purpose only, actual result may vary depending on ambient factors. They are the intellectual property of Nitecore. All rights to take legal action are reserved.



Utilizes a **CREE XP-G2 S3 LED**  
for a max output of 130 lumens

Max Beam Distance: **43m**

Max Peak Beam Intensity: **460cd**

Note: The stated data is measured in accordance with the international flashlight testing standards ANSI/NEMA FL1, using the built-in rechargeable Li-Ion battery (580mAh) under laboratory conditions. The data may vary in real world use due to different battery usage or environmental conditions.



# 180° Wide Range Flood Beam

Ideal for regular training and suburb outdoor activities



## Ultra Compact and Lightweight

Weight (Bracket and Headband Included): **46g (1.62oz)**





## Silicone Sweat Diverting Strip



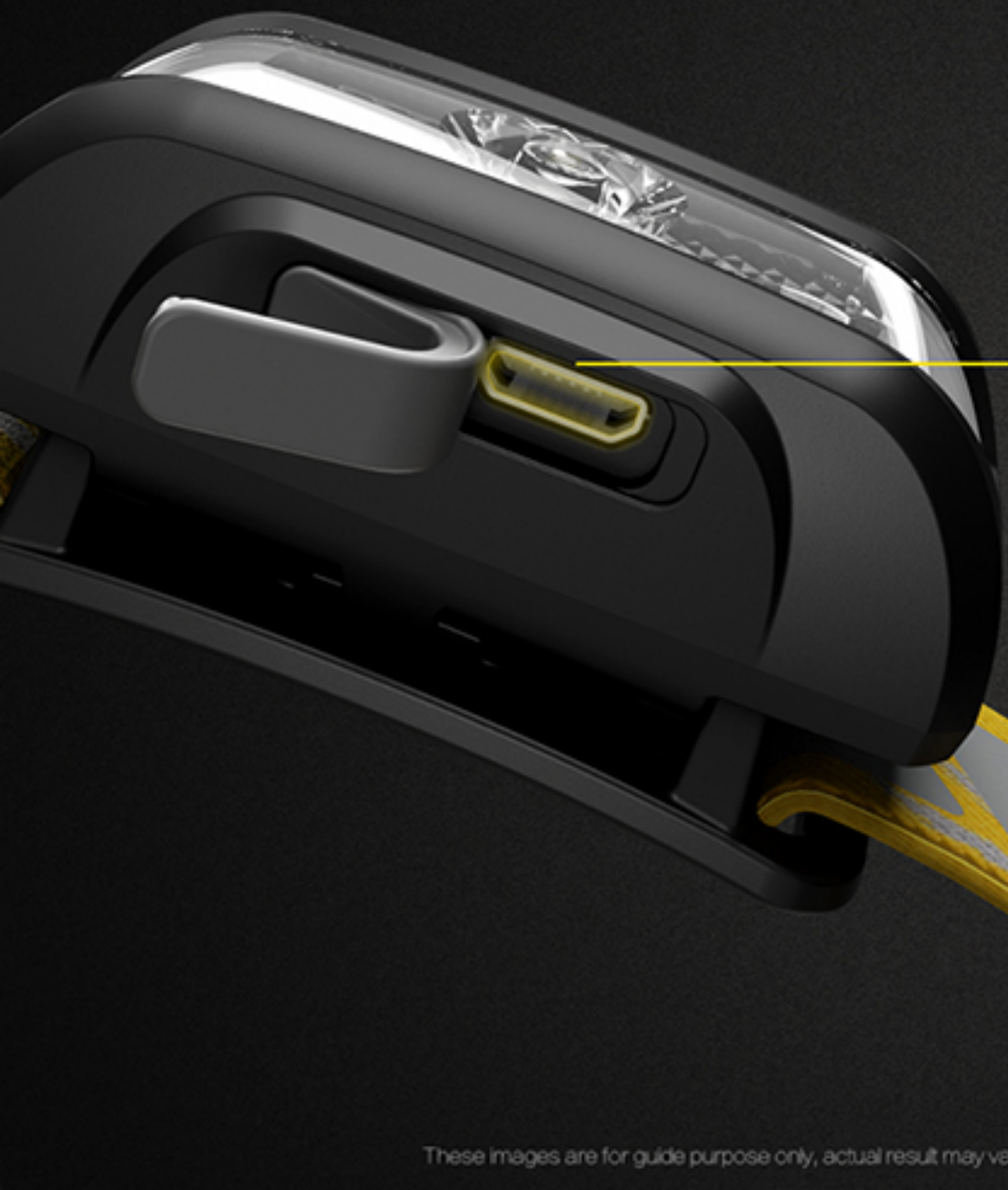
The silicone strip hidden in the headband can divert sweat to the sides of head, preventing irritation on users' eyes that caused by sweat ingress, while preventing sliding of the headband.



The reflective strips can draw the attention of the vehicles or pedestrians behind.



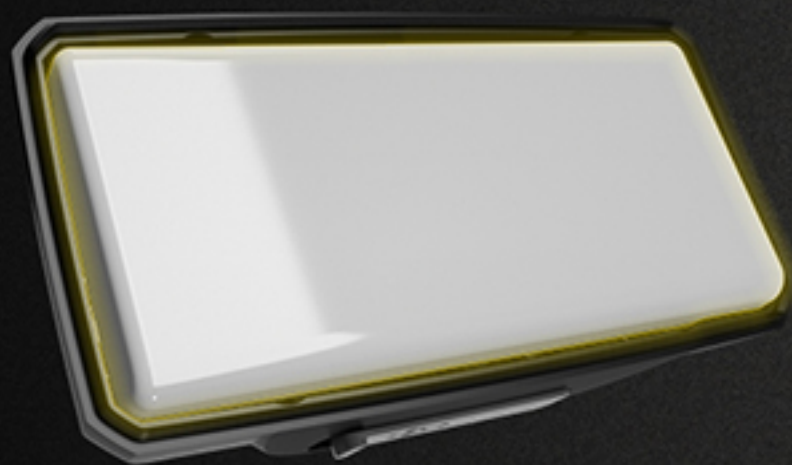




## Micro-USB Rechargeable

The dustproof and waterproof design makes the concealed Micro-USB charging port fearless of the complex outdoor environment.





## Vigorous Battery Performance with Unparalleled Runtime

Max runtime of **150 hours**

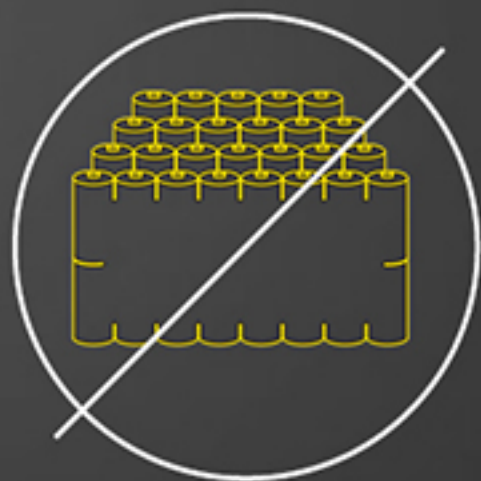
Built-in Rechargeable  
Li-ion Battery of 2.14Wh  
Equivalent to 3 x AAA Batteries



Note: The stated data is measured in accordance with the international flashlight testing standards ANSI/NEMA FL1, using the built-in rechargeable Li-ion battery (580mAh) under laboratory conditions. The data may vary in real world use due to different battery usage or environmental conditions.

These images are for guide purpose only, actual result may vary depending on ambient factors. They are the intellectual property of Nitecore. All rights to take legal action are reserved.





## Rechargeable and Energy-Saving

The built-in high performance li-ion battery can be supported by the USB power.



 **Environmentally Friendly**



Utilizing a rechargeable li-ion battery to minimize the carbon footprint.



## Multiple Light Sources



Auxiliary Red Light



Auxiliary High CRI White Light



Primary White Light





## Auxiliary High CRI White Light

Suitable for short-range illumination while reading, camping or in an emergency of power shortage.



## Color Rendering Capability (CRI)



The NU17 is equipped with auxiliary LEDs with high color rendering capability (CRI $\geq$ 90), allowing for a warm and soft hotspot that resembles the nature of sunlight and giving a sharp visual while reducing eye strain.



CRI Value  $\geq$ 90



CRI Value 70

CRI is a quantitative measure of the ability of a light source to reveal the colors of various objects faithfully in comparison with an ideal or natural light source. The CRI value ranges from 0-100. The higher the value becomes, the more capable a light source is to reveal the true color of an object.



## Auxiliary Red Light

The red light can effectively protect the night vision and is ideal for wildlife observation, astronomy, emergency response and night photography.







## Dual Switch Design

Available to cope with different outdoor scenarios



HIGH



MID



LOW



Red Light



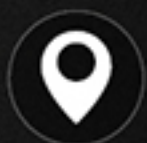
High CRI  
White Light



Red Warning  
Flashing



SOS



BEACON

3 Brightness Levels

3 Auxiliary Modes

2 Special Modes





## Constant current circuit (non-PWM)

Providing stable output and preventing dizziness in prolonged operations



## Total Reflective Optic Lens

To provide a uniform and soft beam







## Power Indicator

The built-in power indicator indicates the remaining battery power. (Patent No. ZL201220057767.4)





## Physical Protection for Accidental Activation



**IP66** Dustproof and Waterproof

**1m** Impact Resistant

The polycarbonate housing ensures lightweight and durability to protect the headlamp from rain and sweat in the outdoor environment.







## NU17 SPEC.

FLI STANDARD	HIGH	MID	LOW	HIGH CRI WHITE LIGHT	RED LOW	RED HIGH	RED WARNING FLASHING	SOS	BEACON
	130 Lumens	28 Lumens	1 Lumen	50 Lumens	1 Lumen	23 Lumens	23 Lumens	130 Lumens	130 Lumens
	6h	10h	150h	4h	80h	3h	6h	-	-
	43m	20m	4m	15m	2m	11m	-	-	-
	460cd	100cd	4cd	55cd	1cd	30cd	-	-	-
	1m(Impact Resistance)								
	IP66 Rating								

Note: The stated data is measured in accordance with the international flashlight testing standards ANSI/NEMA FL1, using the built-in rechargeable Li-Ion battery (580mAh) under laboratory conditions. The data may vary in real world use due to different battery usage or environmental conditions.



## Features

- Utilizes a primary CREE XP-G2 S3 LED with a max output of 130 lumens
- Equipped with auxiliary high CRI white LEDs (CRI≥90, Color Temperature: 4500K) and auxiliary red LEDs
- The primary white light utilizes a total reflective optic lens for uniform and soft beam
- Max peak beam intensity of 460cd and max throw of 43 meters
- Built-in 580mAh Li-ion battery
- High efficiency constant circuit provides a stable output for a max runtime of 150 hours
- 3 brightness levels, 3 light sources and 2 special modes available
- Built-in Li-ion battery charging circuit via a Micro-USB port
- The built-in power indicator indicates the remaining battery power ( Patent No. ZL201220057767.4 )
- Wide range flood optic system of 180° illumination angle specially designed for outdoor applications
- 60° adjustable angle
- Body constructed from durable PC materials
- Waterproof in accordance with IP66
- Impact resistant to 1 meter
- Dimensions: 53.2mm×30.2mm×27.4mm(2.09" ×1.19" ×1.08")  
(Bracket Included)

